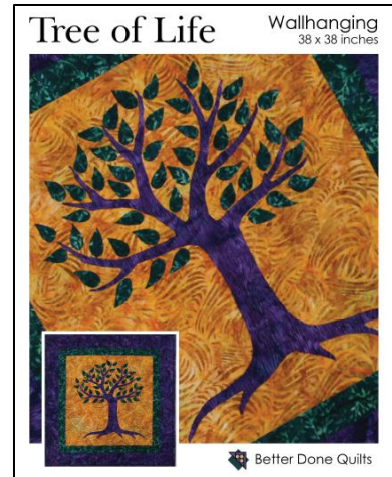


## Tree of Life Wallhanging

This class will teach skills for raw edge appliqué, double mitered borders, and flanged bindings. It is a great class for confident beginners to learn new skills or for experienced quilters to explore new approaches on a quick and fun tree of life wall hanging. We will discuss how to customize the tree and adapt it for many different occasions. At the end of the day, you will have a top with the tree and leaves fused, and some of them appliquéd. You will also have the border attached. You will be able to quilt and bind it with techniques learned in class.

### Supply list:

Tree of Life Pattern (available from the instructor)



### Fabric Needed

- 2/3 yard for tree trunk and branches
- 1/4 yard for leaves
- 1 yard for background
- 1/2 yard for inner border
- 2/3 yard outer border
- 1/3 yard for flange
- 1/3 yard for binding
- 1 1/4 yards for backing
- 1 1/4 yards 45 inch wide batting (baby quilt batting works well, with some extra) – will not be used in class

### Supplies and Tools

- 24 inches x 18 inches lightweight fusible web (Steam a Seam 2 recommended)
- Transparent (Scotch) tape
- Scissors
- Mini Iron (optional)
- Ironing pad (optional)
- Light box (optional)
- Pencil or marking tool
- Notebook and pen
- Working sewing machine with cord
- Thread
- Ruler with 45 degree marking
- Pins
- Rotary cutter

**Before the class:**

- Decide on your fabrics and whether you are making the tree and leaves of the same fabric or different fabrics. There are examples of each in the photos. You can also make a version with scrappy leaves.
- Wash fabric, if desired (fabric does not need to be pre-washed for this project).
- Press fabric (DO NOT STARCH).

If you have any questions, please e-mail Karen at [betterdonequilts@gmail.com](mailto:betterdonequilts@gmail.com) she will set up a call or video call with you.