

Barbara S. Dann
 Alleycat Quiltworks
www.alleycatquiltworks.com
barbara@alleycatquiltworks.com
 814 883 8708

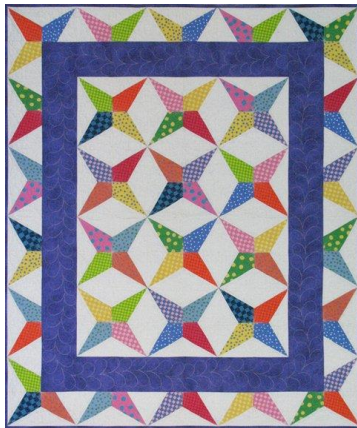
Doubly Charmed

Required for class:

V-Block - \$19.50
 Corner Beam - \$19.50
 Square Squared – 19.50
 Doubly Charmed Pattern – Included at no charge
 These can be ordered at www.alleycatquiltworks.com or purchased in class at a 10% discount.

Total fabric requirements	Charmed Corner Beam 40" x 48"	Charmed V block 47" x 59"
5" squares (Charm packs or from strips)	88 squares (1 ¾ yds total)	
Purple (includes binding)	1 yard	1 ¾ yards
Orange		½ yard
Background	1 ½ yards	2 yards
Backing	2 ¾ yards	3 ¼ yards

Fabric requirements based on 40" of useable fabric with few cutting errors.



This quilt is **Charmed Corner Beam**. The 5" squares are used to make the multi-colored points and the background is white. You can use many prints (charm packs work great!) or one color or print. Purple is the inner border.



This quilt is **Charmed V-Block**. The star points are made with the cut away pieces from Charmed Corner Beam. The background is white as are the triangles surrounding the on-point square (purple) in the center of each star. The chains are made using the purple and white fabric. Orange is used as the inner border and the corner squares. The border is purple.

Class Cutting Instructions

This is a great class to learn and perfect your skills with 3 different tools –V-Block, Corner Beam and Square Squared! We will be making units using all 3 tools – including all my hints and tips for fun, stress-free sewing!

Charmed Corner Beam			
Unit	Piece	Fabric	Cut
Corner Beam	Center Beam	5 " squares	Cut 8
	Side Triangles	Background	One 5" strip

Charmed V Block Cutting Instructions

Unit	Piece	Fabric	Cut
V block	Center Triangle	Background	One - 4" strips
	Side Triangles	Cut aways from Charmed Corner Beam	
Square ²	Center Square	Purple	One - 2 ¾" strips
	Side Triangles	Background	1 -2 ¾" strips cut into 12 squares – 2 ¾" x 2 ¾"
Chains		Purple Background Background	1 - 1 ½" strips 1 -1 ½" strips 1 -2 ½" strips

PLEASE HAVE ALL PIECES PRECUT PRIOR TO ARRIVAL AT CLASS. We will jump right into the techniques with no time allotted for cutting the shapes required. I strongly urge you to use care when cutting the pieces and **CAREFULLY LABEL ALL PIECES**. Having this done before you arrive will make you day in class much more productive and educational. Contact me if you would like the complete cutting instructions. **Bring all your fabric to class.**

Along with your precut pieces, please be sure to bring with you the following tools and equipment:

Sewing machine in GOOD WORKING order (new needle)

Thread

Rotary cutter and mat (new blade)

Invisigrip for the back of the tools - optional, but highly recommended, available in class.

Magic Wand - optional, but highly recommended, available in class

Pigma marking pen or Fine Line Sharpie marker or mechanical pencil

General sewing tools – pins, scissors, seam ripper, stiletto, light, notebook, camera, etc....

If you have any questions or concerns, please email me at quiltergirl@msn.com .